






KONICA MINOLTA

POWERFUL & PORTABLE  
**SONIMAGE HS1**



Premium Point-of-Care Ultrasound

Sonimage HS1 is Konica Minolta's powerful and portable Ultrasound System for use at the point-of-care. As a result of its innovative concept and dedicated tools, Sonimage HS1 is the ideal solution for operators in Anesthesia, Pain, ICU and Emergency; clinical environments with high throughput, where a reliable and accurate imaging solution is required.

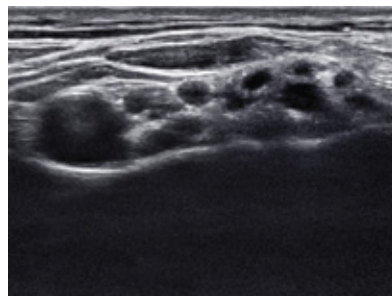
-  Exceptional image accuracy
-  Real ease of use
-  Quick access



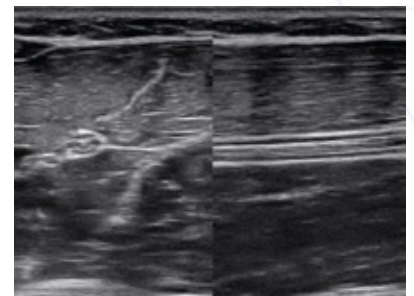
Exceptional image accuracy

Higher accuracy in the ultrasound image results in a clearer identification of the sonoanatomy visualised. Thanks to the advanced technological solutions implemented in the main unit and the transducers, Sonimage HS1 delivers exceptional image clarity on its large, high-performance IPS LCD monitor.

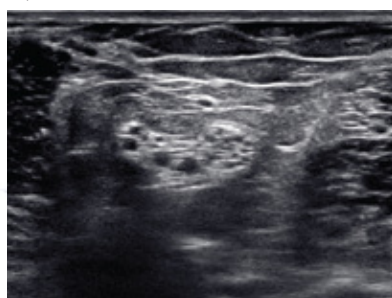
- **3THI Triad Tissue Harmonic Imaging**, for enhanced image clarity
- **Ultra-Broadband Transducers**, for effective multifrequency imaging
- **Real 18 MHz**, high resolution imaging
- **Multi-layer Acoustic Integration Technology**



Supraclavicular view



Median nerve transversal and longitudinal



Popliteal view



Heart: 4 chambers view

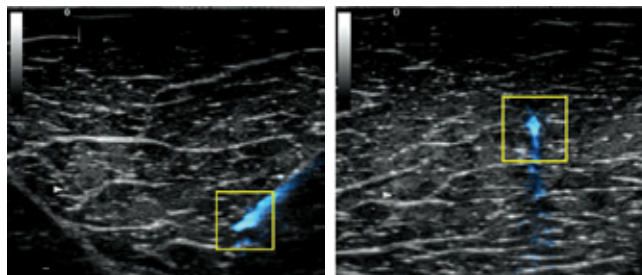
## Accuracy in interventional procedures

Konica Minolta cares about the operator's confidence during interventional procedures and has developed the SNV - Simple Needle Visualization technology. SNV is an extraordinary tool that, without any loss in the B mode image quality, highlights the visibility of the needle shaft and tip.



### SNV - Simple Needle Visualization

- Enhances the needle on the ultrasound image, so you can see it more clearly
- Supports both in-plane and out-of-plane approaches
- Seeing the needle tip clearly enables safer and more efficient procedures



### Real ease of use

Operating Sonimage HS1 combines the advantage of touch screen technology with a simplified console, with only 8 physical buttons and an integrated trackball.

The innovative interface concept makes Sonimage HS1 extremely easy to use and allows you to focus on what counts the most: your patients.



### Quick access

Point-of-Care environments require a reliable imaging solution that can be promptly operated at the patient's side. Due to its compact design and integrated battery, Sonimage HS1 can easily be carried to the point of care and is ready for use in less than 15 seconds.

Sonimage HS1 provides premium ultrasound support **anywhere, anytime.**

- ➔ Portable solution with integrated battery
- ➔ Boot-up in less than 15 seconds from standby
- ➔ Mobile solution on cart with up to three probe connectors



### Made in Japan

Sonimage HS1 and its state-of-the-art transducers are proudly designed and manufactured by Konica Minolta in Japan.

We continuously strive to develop cutting-edge technologies and realize our mission of providing you with the highest **performance** and **reliability**.



KONICA MINOLTA

**KONICA MINOLTA MEDICAL & GRAPHIC IMAGING EUROPE B.V.**

Hoogoorddreef 9, 1101BA Amsterdam, the Netherlands  
info-nl@mg.konicaminolta.eu - www.konicaminolta.eu/healthcare